

# **Best Practice in National Higher Education Project on International Student Recruitment**

**Keun-Yeob OH, Ph.D.**

Director, Management and Economics Research Institute

Professor, Department of International Trade

Chungnam National University, Korea



## Contents

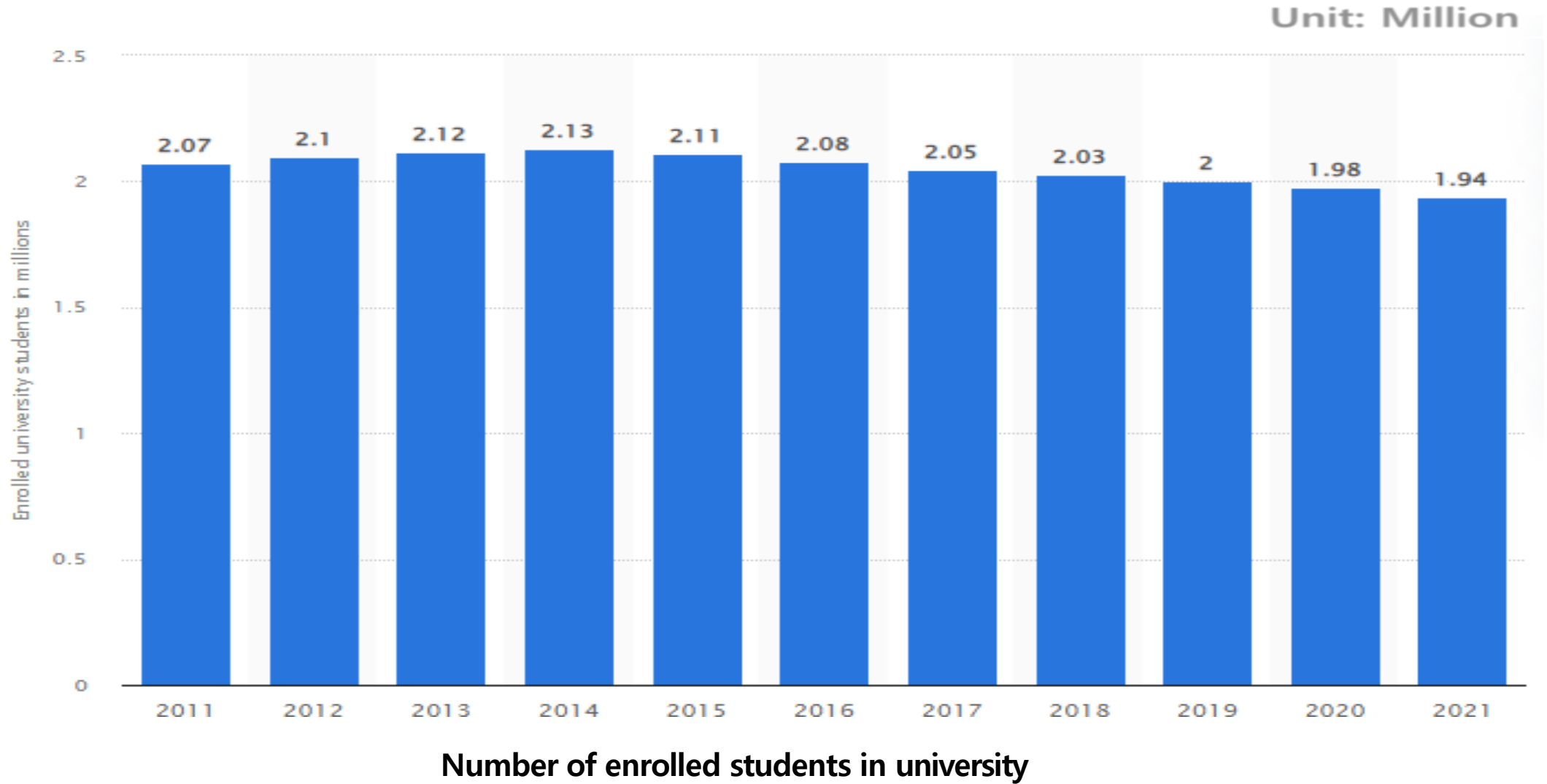
- 
- 1. Higher Education System of Korea**
  - 2. Chungnam National University (CNU)**
  - 3. International Students of CNU**
  - 4. International Programs of CNU**
  - 5. Scholarship Programs by Korean Government**



# 1. Higher Education System of Korea



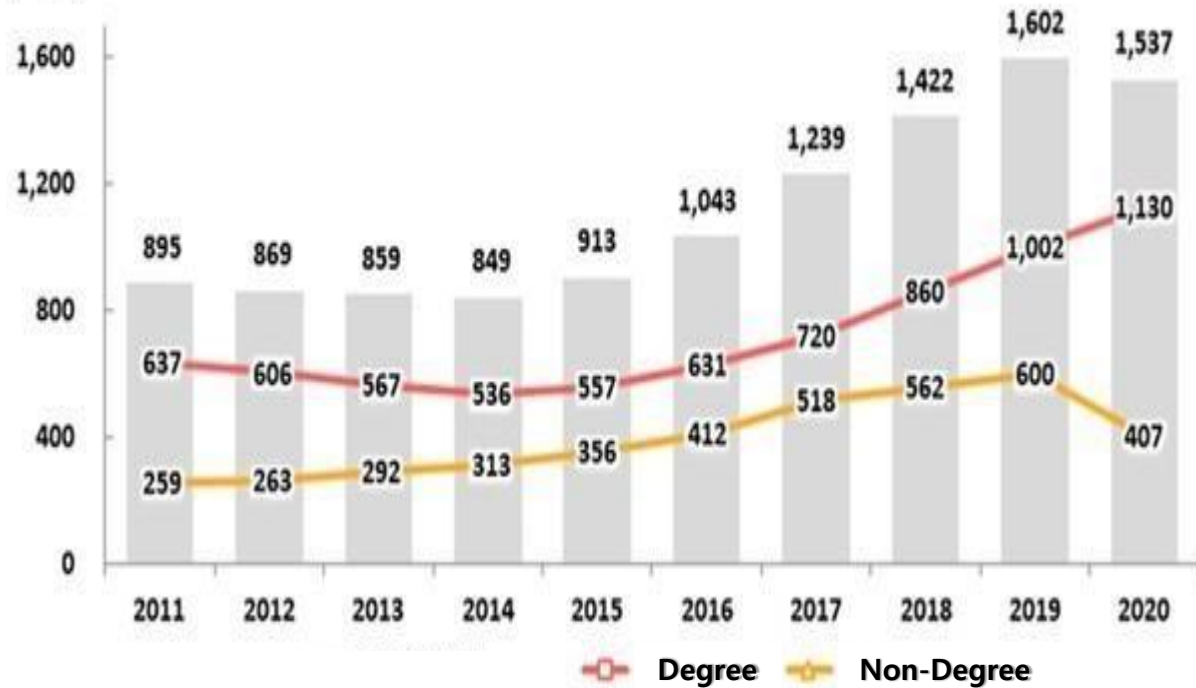
# Statistics of Higher Education in Korea (1)



# Statistics of Higher Education in Korea (2)



Unit: Hundred



Number of foreign students in higher education

Unit: Person, %

Year	Total	China	Vietnam	Mongolia	Japan	U.S.	Others	Asia
2020	153,695	67,030(43.6)	38,337(24.9)	6,842(4.5)	3,174(2.1)	1,827(1.2)	36,485(23.7)	141,232(91.9)
2019	160,165	71,067(44.4)	37,426(23.4)	7,381(4.6)	4,392(2.7)	2,915(1.8)	36,984(23.1)	145,747(91.0)
2018	142,205	68,537(48.2)	27,061(19.0)	6,768(4.8)	3,977(2.8)	2,746(1.9)	33,116(23.3)	128,506(90.4)
2017	123,858	68,184(55.1)	14,614(11.8)	5,384(4.3)	3,828(3.1)	2,767(2.2)	29,081(23.5)	109,915(88.7)
2016	104,262	60,136(57.7)	7,459 (7.2)	4,456(4.3)	3,676(3.5)	2,826(2.7)	25,709(24.7)	91,368(87.6)
2015	91,332	54,214(59.4)	4,451 (4.9)	3,138(3.4)	3,492(3.8)	2,968(3.2)	23,069(25.3)	79,257(86.8)
2014	84,891	50,336(59.3)	3,181 (3.7)	3,126(3.7)	3,958(4.7)	3,104(3.7)	21,186(25.0)	73,229(86.3)
2013	85,923	52,317(60.9)	3,013 (3.5)	3,904(4.5)	4,503(5.2)	3,120(3.6)	19,066(22.2)	75,288(87.6)
2012	86,878	57,399(66.1)	2,458 (2.8)	3,799(4.4)	4,172(4.8)	3,037(3.5)	16,013(18.4)	77,639(89.4)
2011	89,537	60,935(68.1)	2,332 (2.6)	3,700(4.1)	4,645(5.2)	3,023(3.4)	14,902(16.6)	80,766(90.2)
2010	83,842	59,490(71.0)	1,919 (2.3)	3,335(4.0)	4,090(4.9)	2,485(3.0)	12,523(14.9)	76,483(91.2)

Number of foreign students by nationality



## 2. Chungnam National University (CNU)



# Geographical Advantages



Located at central region of South Korea

1<sup>st</sup>

Korean most want to live Among the metropolitan cities

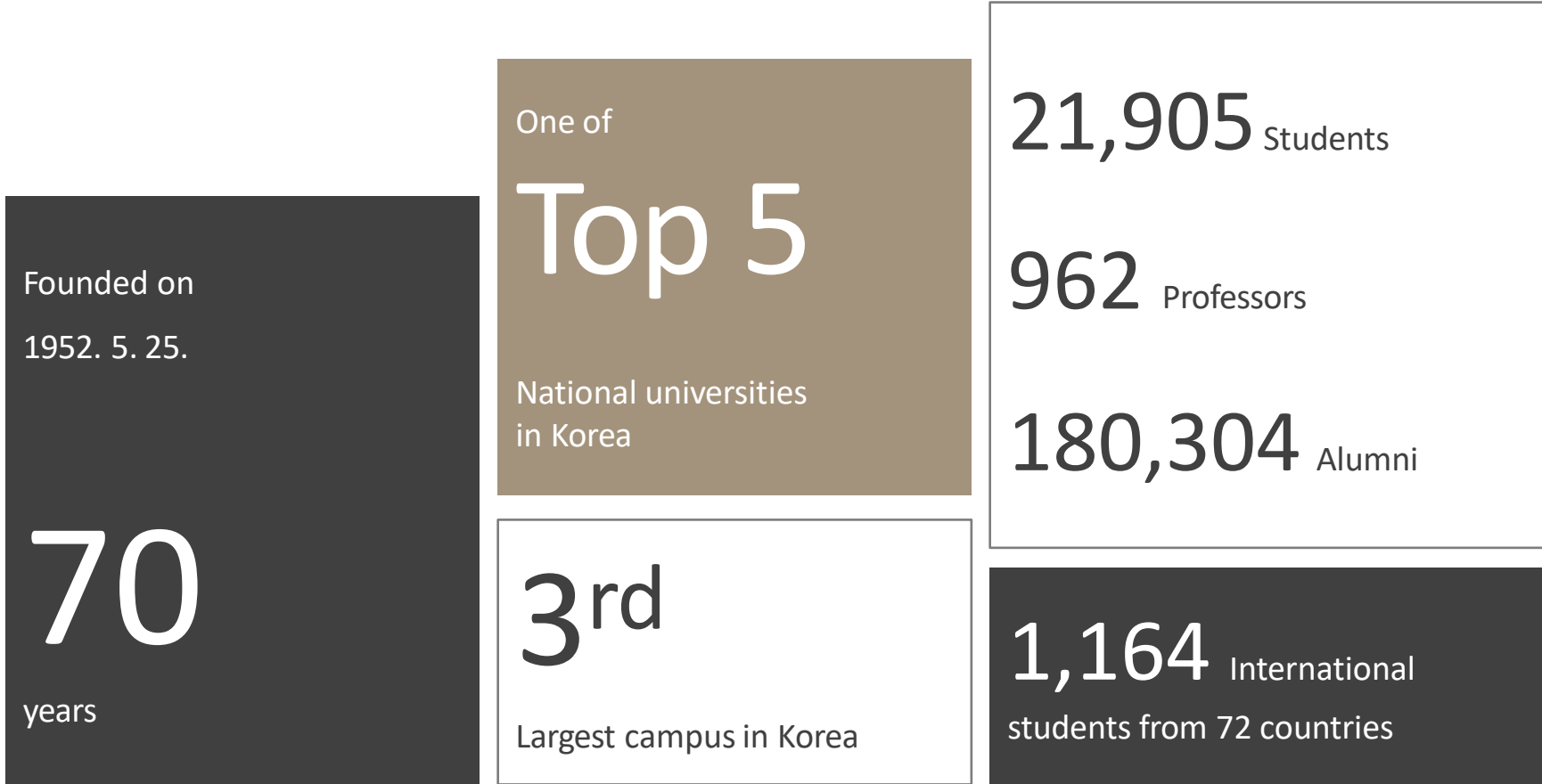


Asia's silicon valley



Hub for transportation

# Introduction Statistics





# Faculties and Graduate Schools



<b>Undergraduate</b>	<b>14 FACULTIES</b>			<b>2 DIRECT CONTROL DIVISIONS</b>
<ul style="list-style-type: none"> <li>HUMANITIES</li> <li>SOCIAL SCIENCES</li> <li>NATURAL SCIENCES</li> <li>ECONOMICS AND MANAGEMENT</li> <li>ENGINEERING</li> </ul>	<ul style="list-style-type: none"> <li>AGRICULTURE AND LIFE SCIENCES</li> <li>PHARMACY</li> <li>MEDICINE</li> <li>HUMAN ECOLOGY</li> <li>ARTS &amp; MUSIC</li> </ul>	<ul style="list-style-type: none"> <li>VETERINARY MEDICINE</li> <li>BIOSCIENCE AND BIOTECHNOLOGY</li> <li>EDUCATION</li> <li>NURSING</li> </ul>	<ul style="list-style-type: none"> <li>DIVISION OF LIBERAL ARTS</li> <li>DIVISION OF MILITARY STUDIES</li> </ul>	

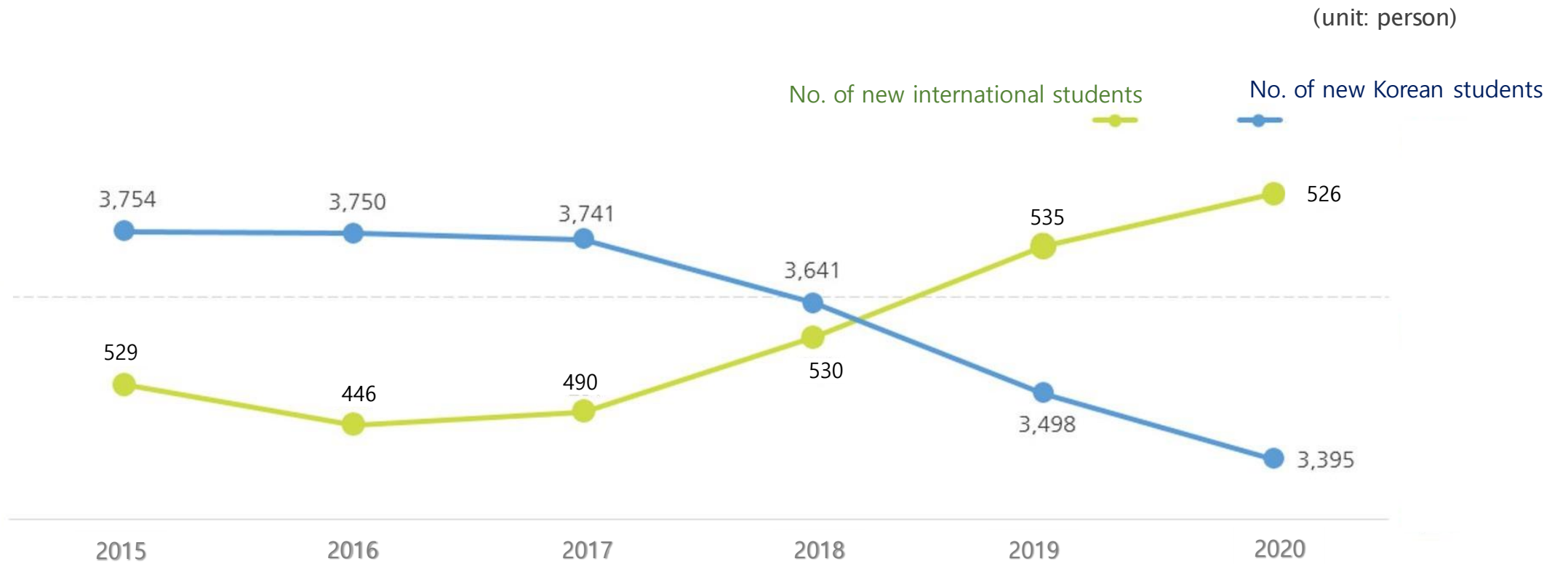
<b>Graduate School</b>	<b>5 Professional Graduate School</b>	<b>8 Specialized Graduate School</b>
<ul style="list-style-type: none"> <li>MASTER'S PROGRAM</li> <li>DOCTORAL PROGRAM</li> </ul>	<ul style="list-style-type: none"> <li>LAW</li> <li>MEDICINE</li> <li>ANALYTICAL SCIENCE &amp; TECHNOLOGY</li> <li>ENERGY SCIENCE &amp; TECHNOLOGY</li> <li>DRUG DEVELOPMENT &amp; DISCOVERY</li> </ul>	<ul style="list-style-type: none"> <li>EDUCATION</li> <li>PUBLIC ADMINISTRATION</li> <li>PUBLIC HEALTH</li> <li>INDUSTRY</li> <li>INTELLECTUAL PROPERTY LAW</li> <li>PEACE AND SECURITY STUDIES</li> <li>NATIONAL PUBLIC POLICY</li> </ul>



# 3. International Students of CNU



# Statistics of International Students (1)



Number of (domestic, international) new (1<sup>st</sup> year) students

# Statistics of International Students (2)



(Unit: person)

## Number of foreign students of CNU

Classification	2016	2017	2018	2019	2020	2021
Undergraduate	446	490	530	535	526	444
Graduate	320	337	363	364	373	421
Total	766	827	895	899	899	865
Language school	392	471	508	340	237	195
etc.	55	51	52	61	28	32
Total	447	522	560	401	265	227
Grand Total	1,213	1,349	1,455	1,300	1,164	1,092



# 4. International Programs of CNU

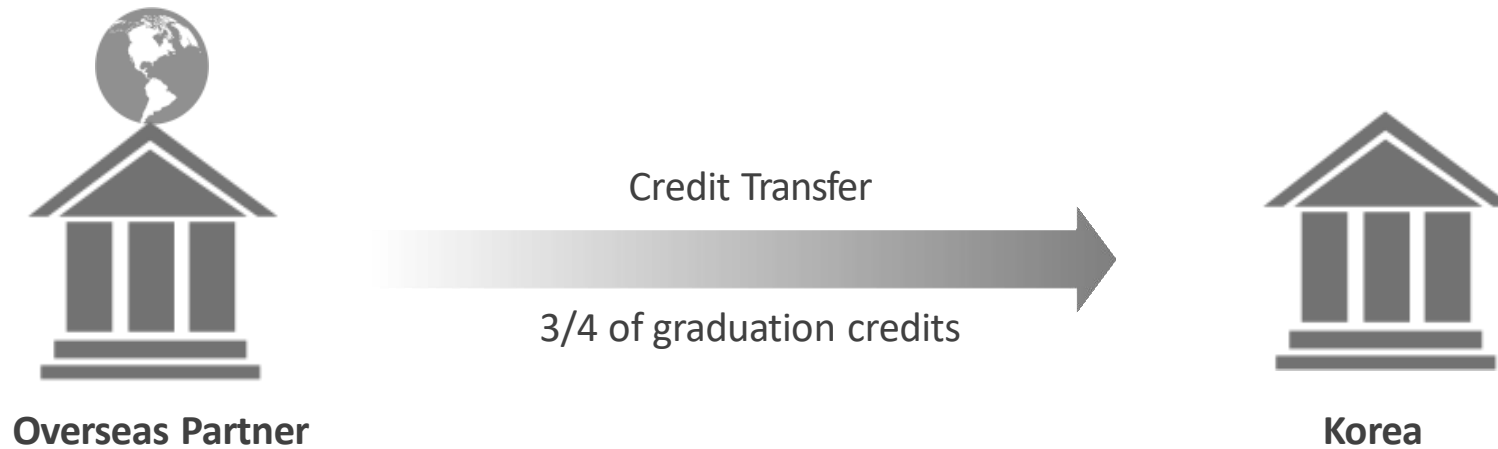




# Dual Degree Program (1)

## Dual degree

- Korean university can transfer credits earned at partner universities up to three-quarters(3/4) of its graduation credits



“ 3(Partner) + 1(CNU) Dual Degree Program = TWINNING program ”



# Dual Degree Program (2)

## Program Overview

- Earn two degrees from each universities by studying 3 years(home university) + 1 year(CNU)
- Study one academic year(2 semesters) at CNU
- Minimum credit requirement is a quarter of graduation credits of each department at CNU





## Dual Degree Program (3)

### Program Overview

	2+2 Dual degree	3+1 Twinning
<b>Min. required credit</b>	<b>1/2 of graduation credits</b>	<b>1/4 of graduation credits</b>
<b>Study period</b>	<b>2 years or more</b>	<b>1 year</b>
<b>Financial support</b>	<b>N/A</b>	<b>50% of tuition waiver</b>

**“ TWO degrees in just ONE year ”**





# Dual Degree Program (4)

## Study field

---

**Department of International Trade**

**Division of Animal and Dairy Science**

**Department of Architectural Engineering**

**Department of Geology & Earth Environmental Sciences**

**Department of Mathematics**

**Department of Biological Science**

**Department of Microbiology and Molecular biology**

**Department of Materials Science and Engineering**

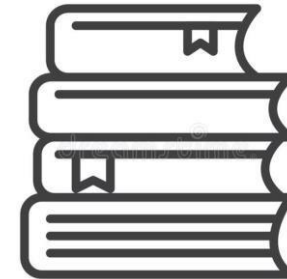
**Department of Mechatronics Engineering**

**Department of Crop Science**

**Department of Asia Business International Studies**

**Department of Electric, Electronic & Communication Engineering Education**

**Department of Pharmacy**



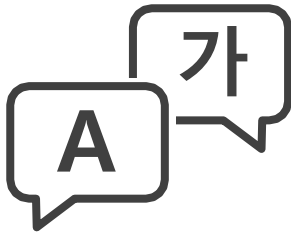


## Dual Degree Program (5)

### Advantage

---

- 50% of tuition waiver for two semesters
- Complimentary Korean language course for three semesters  
(provided by CNU language Institute, USD 1,300/semester)
- Various cultural activities



### Eligibility

---

- Completed minimum four semesters at home university
- Either English or Korean proficiency
  - ⇒ Level 4 or higher on TOPIK(Test of Proficiency in Korean)
  - ⇒ Recognized English proficiency test TOEIC 700 or equivalent



## Dual Degree Program (6) : Partner Universities



**Indonesia**

---

**Gadjah Mada university** Faculty  
of Animal Science



**Indonesia**

---

**Institute Teknologi Bandung**  
Department of Architectural  
Engineering



**Indonesia**

---

**Universitas Sebelas Maret**  
Faculty of Animal Science



**Taiwan**

---

**Yuan Ze University**  
Department of International  
Trade



# Global Scholarship Program (GSP)

## Introduction

- ▷ Student exchange program with scholarship
- ▷ Study at CNU for a semester (6 months only)

## Benefits

01

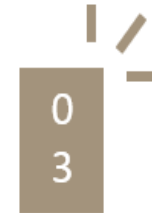


100% Tuition fee waiver

02



50% Tuition fee waiver of  
Korean Language course



Scholarship to support living cost  
in Korea



# 5. Scholarship Programs by Korean Government





# GKS (Global Korea Scholarship)



Log-in | Korean | English | Chinese | Japanese | Other Languages

connected: 2,020 | visited yesterday: 20,692 | members(today): 276,220(76)

Studying in Korea

Study in Korea The Land of Higher Education challenge in Korea!

Home > University & College information > Search University & College

## Search University & College

HELP

University	<input type="text"/>	Affiliation(Major)	<input type="text"/>
University Class	All	National / Public / Private	All
Region	All	Dormitory	All
Scholarship	Yes	English exclusive lecture	All
Course	Bachelor's Degree		

Map

Search

No	School	Region	Dormitory	Scholarship	English exclusive lecture	Map
1	HANDONG GLOBAL UNIVERSITY	Gyeongangbuk-do	0	0	0	<a href="#">View</a>
2	CHEJU HALLA UNIVERSITY	Jeju-do	0	0	X	<a href="#">View</a>
3	Korea Maritime and Ocean University	Busan	0	0	X	<a href="#">View</a>
4	UNIVERSITY OF SEOUL	Seoul	0	0	X	<a href="#">View</a>

### University & College Information

- > Search University & College
- > Certified schools
- > Resource Center
- > Korean Language Center

### Overseas study application wizard

You can use the wizard to conveniently apply for overseas study step by step.

[Start Now >>](#)

### Search Univ. & College

Univ.

Major

[Search](#)

**GKS(Global Korea Scholarship)**

- Korea Government Scholarship Program
- Awarded 6550 from 148 countries since 1967

**How?**

✓ Scholarship Program by Foundations & Companies

✓ Scholarship Program by Universities



# Scholarships by Foundation & Companies

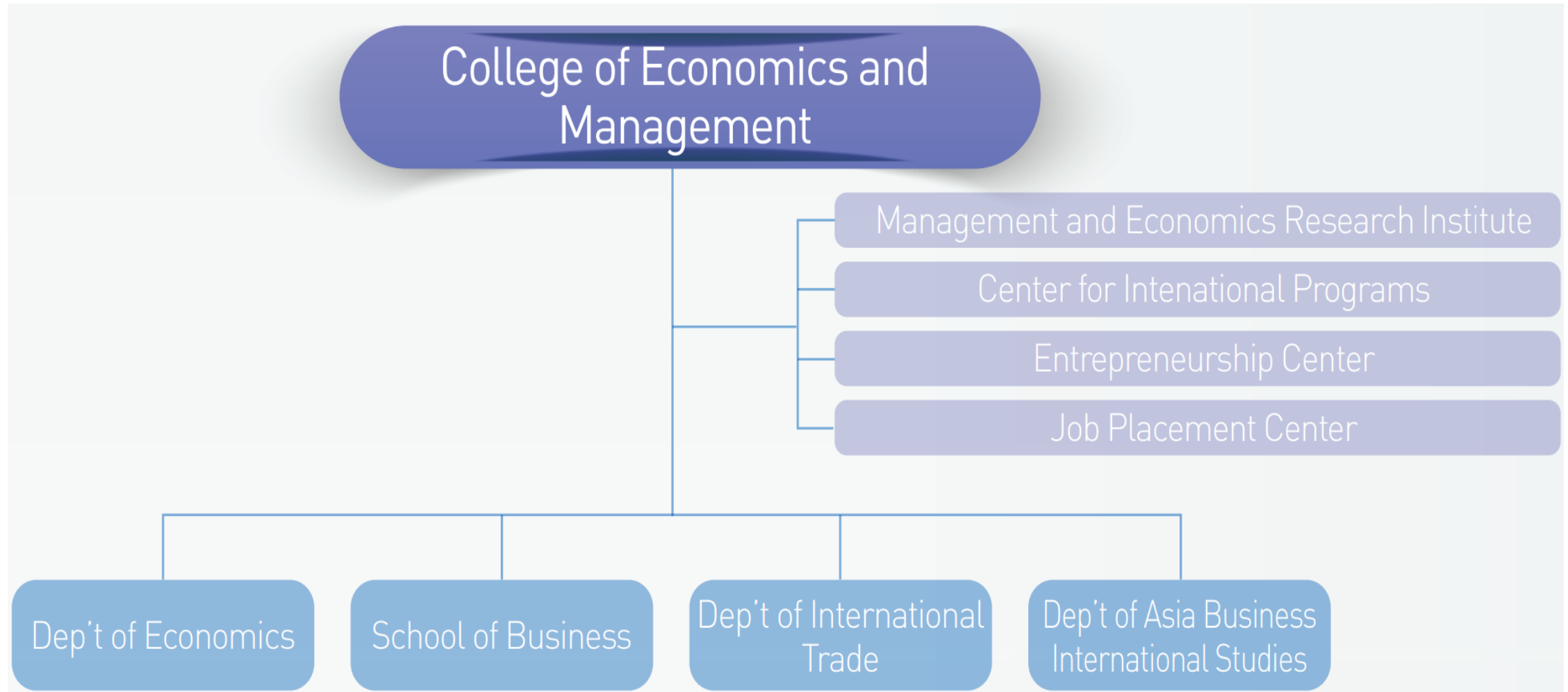
	Target	Study Field	Benefits	No. of recipients
POSCO T Park Foundation	Young intellectuals from Asian countries who plan to enroll in Master's or Doctoral courses at foundations' cooperating universities	International studies, Korea studies, public policy, science and engineering	Full tuition and a living expense for 22 months of staying in Korea	around 30
Korea Foundation	M.A and Ph.D. candidates about 30 countries around the world	Korea-related studies	Tuition fee( grant differ depending on area and country's tuition fee and price level) for 1 year	150 students a year from all over the world
Daewoong Foundation Scholarship	International students studying in Korea		Living cost, Korean language education, cultural program	100 and below
Busan Foundation for International Cooperation	Refer to <a href="http://www.bfic.kr/main/main.asp">www.bfic.kr/main/main.asp</a>			
Samsung Scholarship Foundation	Refer to <a href="http://www.sdream.or.kr">www.sdream.or.kr</a>			
Pencil Scholarship Foundation	Refer to <a href="http://www.pensaf.or.kr">www.pensaf.or.kr</a>			
Hansaeyes24 Foundation	Refer to <a href="http://hansaeyes24foundation.com">hansaeyes24foundation.com</a>			



# 6. College of Economics and Management







# Leading College Since 1958

<http://cem.cnu.ac.kr/>  
+82-42-821-5512~5515

## Statistics (September, 2019)



Male 1,144  
Female 1,019

Korean students 100  
International students 58



# 7. Department of International Trade





## Department of International Trade

Professors (<https://cem.cnu.ac.kr/trade/index.do>)



**Moon, Hee-Cheol** (文熙哲), Ph.D.

Korea University  
Electronic Commerce, Int'l Trade Practices,  
Internationalization of SME



**Oh, Keun-Yeob** (吳根燁), Ph.D.

Ohio State University  
International Economics, Econometrics,  
Intellectual Property Rights



**Cho, Hyuk-Soo** (曹赫秀), Ph.D.

Washington State University  
International Trade



**Park, Hong-Gyue** (朴烘奎), Ph.D.

Cardiff University  
International Transportation and Logistics



**Kim, Jongheuk** (金鍾赫), Ph.D.

University of Colorado at Boulder  
Macroeconomics, International Finance,  
Monetary Economics



**Jeon, Kiyong** (全基映), Ph.D.

Univ. of Pittsburgh  
International Finance, Macroeconomics



**Shin, Sangwha** (辛尙和), Ph.D.

Michigan State University  
International Finance



## Department of International Trade

- **Master Program**
  - 2 years
  - about 30 students
  
- **Ph.D Program**
  - 3~4 years
  - about 20 students
  
- **Main Scholarship: Brain Korea 21 (<https://bk21four.nrf.re.kr/>)**
  - ₩1,000,000(\$ 800)/month, for master students
  - ₩ 1,600,000(\$ 1,300)/month, for Ph.D students
  
- **Other scholarships**
  - TA, RA
  - Research fund with professors
  
- ✓ Look for excellent person who wants to study in Korea!
- ✓ Faculty member in Foreign Universities who does not have Ph.D degree are very welcome!



# 8. Research Cooperation





## International research Cooperation

- **Master Program**
  - 2 years
  - about 30 students
  
- **Ph.D Program**
  - 3~4 years
  - about 20 students
  
- **Main Scholarship: Brain Korea 21 (<https://bk21four.nrf.re.kr/>)**
  - ₩700,000(\$ 600)/month, for master students
  - ₩ 1.300,000(\$ 1,000)/month, for Ph.D students
  
- **Other scholaships**
  - TA, RA
  - Research fund with professors
  
- ✓ Look for excellent person who wants to study in Korea!
- ✓ Faculty member in Truong Mai who does not have Ph.D degree are very welcome!

# Thank you



**Homepage**

<http://www.cemcnu.ac.kr>



**Contact Numbers**

+82-42-821-5560(office)

+82-10-2558-7805(mobile)



**Email Address**

[kyoh@cnu.ac.kr](mailto:kyoh@cnu.ac.kr)